

TRAVELMARVEL 

Travel More

# NEW ZEALAND

Featuring Rail Journeys



## 2023/24

Premium journeys at exceptional value

**SAVE** up to  
**\$1,200** per couple\*

Earlybird Offers

\*See pages 20-21  
for details







“Travelmarvel’s tours are the perfect way to see the variety New Zealand has to offer.”

Steven, UK

# Why Choose TRAVELMARVEL



## MORE VALUE

Travelling with us means you'll visit incredible destinations, see all the must-see sights, stay in premium accommodation, and enjoy authentic meals, all without paying for the extras you don't want or need.



## MORE CHOICE

We know that one size doesn't fit all, so our itineraries are designed to provide the perfect balance between exploring all the iconic sights while still having plenty of time to do your own thing.



## MORE EXPERIENCE

Backed by the award-winning APT Travel Group, we're proud to be owned and run by the McGeary family, who have spearheaded the travel industry for 95 years.



## MORE RELAXED

Travelling with like-minded people means you'll experience a more casual and relaxed atmosphere where fellow travellers quickly become new-found friends.

# EXPLORE MORE OF *New Zealand*



## AORAKI/MOUNT COOK NATIONAL PARK

Experience alpine splendour at New Zealand's highest peak.



## FOX GLACIER

Enjoy the awe-inspiring majesty of this remarkable region.



## MILFORD SOUND

Cruise through Milford Sound and be moved by its tranquillity.

## BAY OF ISLANDS

Discover an aquatic wonderland during a spectacular cruise.



## WAITOMO

Enjoy the luminous natural spectacle of the Waitomo Glow Worm Caves.



## ARTHUR'S PASS NATIONAL PARK

Franz Josef

Fox Glacier

Westland Tai Poutini National Park

Aoraki/Mount Cook National Park

Aoraki Mount Cook

Christchurch

Lake Tekapo

## SOUTH ISLAND

Milford Sound

Fiordland National Park

Queenstown

Dunedin

## LAKE TEKAPO

See beautiful Lake Tekapo and the Church of the Good Shepherd on its shores.





### AUCKLAND

Travel to the striking harbourside city of Auckland, the 'City of Sails'.



### ROTORUA

Discover geothermal attractions and a rich cultural heritage.



### LAKE TAUPO

See this vast alpine lake, home to stunning scenery and fun outdoor activities.



### WELLINGTON

Explore New Zealand's charming capital city.



### CHRISTCHURCH

Wander around the vibrant, modern city of Christchurch.

# Contents

- 4 Explore More of New Zealand
- 6 Book with Confidence
- 7 OneTomorrow
- 8 More Ways to Travel
- 10 We Take Care of Everything
- 12 Included Sightseeing
- 14 Premium Accommodation
- 16 Authentic Flavours
- 18 Traveller Club
- 19 Holiday Maps
- 20 Earlybird Offers

## 22 NEW ZEALAND LAND JOURNEYS

- 24 New Zealand Getaway 15 Days
- 26 Incredible New Zealand 13 Days
- 28 New Zealand Discoverer 12 Days
- 29 Southern Escape 8 Days
- 30 Northern Explorer 8 Days
- 31 Bay of Islands 5 Days

## 32 NEW ZEALAND BY RAIL

- 34 New Zealand Rail Adventure 15 Days

## 36 GENERAL INFORMATION

- 36 Enhance Your Journey
- 37 Pre & Post Accommodation
- 38 General Information & Conditions

“An overall great experience. Staff were professional and helpful and the other travellers were friendly. Would recommend to others.”

Peter & Margaret, NSW

To explore more of New Zealand visit

[travelmarvel.com.au/newzealand](http://travelmarvel.com.au/newzealand)





# Book WITH CONFIDENCE

Travelmarvel, part of the APT Travel Group, has a long history of caring for Australian travellers. We understand freedom and flexibility is important when making holiday plans. That's why when booking with us, we'll support you if plans change, and ensure your health and safety is our highest priority.



#### Flexible bookings

We have a range of covers to give you added flexibility. Like our Deposit Peace of Mind Guarantee, which allows you to cancel and move your deposit to another date or trip<sup>^</sup>. And you can secure your place for up to seven days without paying a deposit.



#### Safe journeys

Your health – and that of your family, as well as our staff and crew – is Travelmarvel's highest priority. You can rely on our industry-leading health protocols to help ensure everyone's health and wellbeing.



#### All taken care of

We make planning your travel experience as seamless as it can be. Our travel experts look after all aspects of your journey. There's 24/7 emergency support and we'll keep you updated on any travel requirements.

Consider protecting your travel plans with a travel insurance policy that's right for you. Ask our travel experts to quote on an nib Travel Insurance policy.

<sup>^</sup>Conditions Apply. Visit [www.travelmarvel.com.au/about-us/travel-information/security-and-confidence](http://www.travelmarvel.com.au/about-us/travel-information/security-and-confidence) for full terms and conditions.



From cancelled trips, to broken legs, stolen luggage and even COVID – nib is here to protect your trip, health and wellbeing.



Consider PDS & TMD.  
Issuer: Pacific International Insurance.

Australian Pacific Tours Pty Ltd (APT), ABN 44 004 684 619 arranges this travel insurance as a distributor of MCA Insurance Brokers Pty Ltd (MCA), ABN 68 005 522 181, AFSL 240942 who has been authorised to distribute nib Travel Insurance by nib Travel Services (Australia) Pty Ltd (nib) ABN 81 115 932 173, AFSL 308461. APT is not authorised to give you any advice about travel insurance. APT may receive a commission as a percentage of the policy premium. Read the PDS, FSC and TMD available from us before you buy. If you are unhappy with the services provided by the insurer or nib, contact nib on 1300 025 121. This insurance is underwritten by Pacific International Insurance Pty Ltd, ABN 83 169 311 193.

# More EXPERIENCED



"Travelmarvel is part of the APT Travel Group, an industry-leading group of companies, proudly owned by our family with roots that date all the way back to 1927. We've been designing and operating our premium Travelmarvel holidays for more than 30 years – and we are looking forward to many more years of exciting adventures with you.

Thank you for considering Travelmarvel for your next premium New Zealand holiday.

We hope to welcome you soon."

Geoff McGeary OAM  
Company Owner

Robert McGeary  
Director

Lou Tandy (nee McGeary)



The OneTomorrow Charitable Fund is an initiative established by the APT Travel Group. OneTomorrow's mission is to make a positive and enduring impact on nature and the communities we touch. Supporting various grassroots initiatives around the world, we aim to create immediate and long-term change in important environmental and humanitarian causes.



Australia is a land of environmental extremes. Due to natural disasters and a global pandemic, Australia's rural communities are facing some of their toughest times yet. By supporting Rural Aid, Travelmarvel is helping our farming and rural communities when they need it most.

## A WORLD OF DIFFERENCE

At OneTomorrow we believe in travel as a platform for change. Across the APT Travel Group, we've partnered with a range of organisations and implemented initiatives to help protect the environment and ensure the wellbeing of local people wherever we go.

## MAKING TRAVEL MEAN MORE

Working together, we can support not-for-profit organisations to continue helping their communities. The best part? Donations through OneTomorrow are tax deductible\*, and all donations will be matched dollar for dollar. So together we can double our impact.

**With your help, we can continue  
to shape the world together**

Visit our website to learn more about the causes we support  
**[onetomorrow.com.au](https://onetomorrow.com.au)**



\*For terms and conditions visit our website.





# More Ways TO TRAVEL

DISCOVER THE BEAUTY OF NEW ZEALAND BY LAND AND RAIL

Travelmarvel's range of travel styles allows you to explore New Zealand in a way that best suits you. Journey along some of the most scenic steel tracks on an epic rail adventure or wind through the magnificent countryside by coach.

## THE CHOICE IS YOURS

Whether you're looking to tick off all the iconic sights of the North Island, deep dive into the landscapes of the South Island or want to do it all, our immersive land journeys are for you. If a rail journey between mountains, lakes and rolling countryside is calling, look no further. We've left no stone unturned in bringing you a range of travel styles to choose from, so you can explore New Zealand in a way that is just right for you.

## TRAVEL STYLES DESIGNED FOR THE DESTINATION

With some of the most scenic touring routes in the world, New Zealand's wild geography is perfect for road trips and discoveries by rail. Whether you're on a coach or a train, we've designed our holidays to offer the best seat in the house. See the snow-capped Alps, tranquil fiords and towering volcanoes. Pristine beaches, rolling green hills and lakes of the brightest blue. In between, you'll visit vibrant cities and charming towns.





Lake Matheson near Fox Glacier



Te Puia, Rotorua



Slice through stunning scenery by rail

## Land Journeys



Join an exciting land journey to visit New Zealand's famous landmarks and lesser-known gems. Delve into fascinating Māori culture and explore striking landscapes, all in total comfort, while staying in centrally located hotels or properties with breathtaking views. From the sub-tropical and geothermal regions of the North Island to the mountains, glaciers and lakes of the South Island, a land journey is the perfect way to experience the diversity of Aotearoa, the Land of the Long White Cloud.

## Rail Adventures



A contrast to the fast pace of everyday life, rail travel is relaxing, comfortable and social. Be left in awe by the ever-changing scenery as you travel through diverse landscapes that cannot be accessed by any other form of transport. From steam-powered heritage railways to some of the most scenic rail journeys in the world, your experience will be so much more than your average train ride. Enjoy ample leg room to stretch your legs as you take in the sweeping views.





# We Take Care OF EVERYTHING

LOOKING AFTER YOU ISN'T JUST OUR JOB – IT'S OUR PASSION

At Travelmarvel, we know that great service is about going above and beyond, which is why our staff have a 98% satisfaction rating on average from our guests.

## **YOUR EXPERT TOUR DIRECTOR**

Your dedicated Tour Director will be with you every step of the way, providing an immersive and relaxing journey. Friendly and knowledgeable, they're able to provide an insider's perspective so you can experience an authentic holiday that runs seamlessly.

## **PERFECTLY TAILORED ITINERARIES**

Travelmarvel's itineraries are designed with great attention to the finer details, so you'll see all the popular sights, as well as hidden gems. We ensure your journey is rewarding and relaxing, allowing you to make the most of each unique destination, with plenty of time to explore at your own pace.





World Heritage-listed Milford Sound

## YOUR DRIVERS & LOCAL GUIDES

Our Drivers play a pivotal role in the smooth running of your holiday and its everyday enjoyment. With years of experience and an unrivalled safety record, they'll take you from place to place with a friendly smile. Joining you in select locations, expert local guides will pass on their knowledge to guarantee you not only visit the landmarks, but also the less-travelled places.

Meet the crew

## Michelle Newsome, Tour Director

Michelle has been guiding travellers around the world for nearly a decade, and has spent the last three years showing guests around her home country, New Zealand. "For me, experiencing the magic and grandeur of New Zealand's scenery never loses its appeal."







# INCLUDED *Sightseeing*

EXPLORE THE INCREDIBLE BEAUTY OF NEW ZEALAND

Your Travelmarvel holiday covers all the must-see sights in New Zealand and also shines a light on the lesser-known wonders of its rich culture and history. Here's a taste of what to expect.

## **SIGHTSEEING HIGHLIGHTS**

Your journey covers an extensive range of must-see sightseeing, which ensures you cover all the major highlights and icons. And best of all, they're all included.

### **Te Puia, Rotorua**

Discover New Zealand's premier cultural centre, a major custodian of Māori heritage and home to geothermal wonders such as the world-famous Pōhutu geyser (meaning constant splashing in Māori). You will also see bubbling mud and pools of boiling water still used for cooking today.

### **Agrodome, Rotorua**

Explore this 64-hectare working cattle and sheep station – a New Zealand classic. You'll see sheep-shearing demonstrations, dog trials and an animal nursery.

### **Fox & Franz Josef Glaciers**

The surrounding region of these two glaciers is an astonishing sight, as they flow almost to sea level amid lush rainforest. Their advance has created immense valleys, while simultaneously producing majestic craggy peaks that tower above you.





Rotorua is a geothermal wonderland



Te Puia, Rotorua



TranzAlpine Train



Meet the animals at Agrodome

## INSIDER EXPERIENCES ☆

These have been carefully designed to take your holiday from amazing to extraordinary. Here is just a selection of the remarkable moments awaiting you.

### Bay of Islands Cape Brett Cruise ☆

Keep an eye out for sealife encounters as you cruise through the Bay of Islands at the tip of the North Island. Set off from the Cape Brett Peninsula and sail through the distinctive Hole in the Rock formation (conditions permitting).

### Milford Sound Cruise ☆

Journey through the beautiful Fiordland National Park on your way to spectacular Milford Sound. Once you arrive, set sail on a cruise along the full length of its pristine waters, basking in all the natural wonders you encounter.

### Majestic Aoraki/Mount Cook ☆

Travel through the glorious alpine landscapes of Aoraki/Mount Cook National Park and stop to admire breathtaking views of New Zealand's highest peak.

### Waitomo Caves ☆

Descend into the caves beneath the lush Waitomo hills and look up to see a canopy studded with thousands of stars. The phenomenon is the work of glow worms that are unique to New Zealand.

### TranzAlpine Train ☆

Journey across the South Island from coast to coast on one of the world's most iconic rail trips. Climb over the snow-capped Southern Alps through spectacular scenery to the wild west coast.





# PREMIUM Accommodation

RELAX IN COMFORT AFTER EACH DAY OF SIGHTSEEING



Heartland Hotel Fox Glacier



Copthorne Hotel & Apartments,  
Queenstown Lakeview

Whether you're admiring the views, or enjoying the wonderful location, you're sure to be impressed by the quality, style and comfort of our hand-picked accommodation.

## **Sudima Auckland City**

Located in the heart of Auckland's chic food and entertainment precinct, this new hotel features smart, spacious rooms with premium amenities and fabulous views from one of Auckland's best rooftop bars.

## **Sudima Rotorua**

Built right on the shore of Lake Rotorua, take advantage of some breathtaking views. Plus you'll love being just a short stroll from Rotorua's vibrant CBD.

## **Heartland Hotel Fox Glacier**

Since 1928, the Heartland Hotel Fox Glacier has provided a welcome retreat for climbers and travellers alike. Lovingly restored, the hotel maintains its traditional features while providing modern comforts.

## **Scenic Hotel Dunedin City**

A contemporary, award-winning hotel with well-appointed, spacious rooms in downtown Dunedin, the Scenic perfectly reflects the city's lively energy.

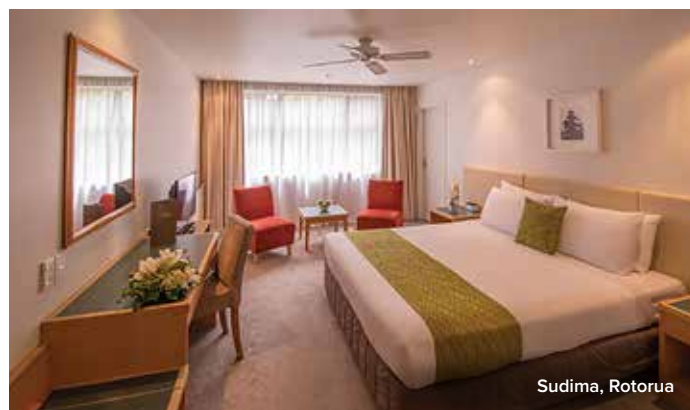




Peppers Bluewater Resort, Lake Tekapo



Sudima, Auckland



Sudima, Rotorua

## INSIDER EXPERIENCES ☆

Throughout your Travelmarvel journey, we have carefully selected a range of hotels and resorts that are guaranteed to further enhance your New Zealand experience. Each property showcases the very best of their region and the unique settings offer a different perspective of your surrounds. Whether it's modern designs or awe-inspiring views, you're sure to be impressed by the quality of these hand-picked hotels and resorts.

### Peppers Bluewater Resort, Lake Tekapo ☆

The breathtaking surrounds, water views, innovative architecture and airy guest rooms at Peppers Bluewater Resort make for a memorable stay. Set a few steps from Lake Tekapo at the foothills of the towering Southern Alps, Peppers Bluewater Resort provides the perfect base from which to explore the South Island's magnificent Mackenzie Country.

### Copthorne Hotel & Apartments, Queenstown Lakeview ☆

Here, your room boasts sublime views of Lake Wakatipu and the snow-capped peaks of The Remarkables. You'll be just a short stroll from Queenstown's vibrant centre, allowing you to explore and make the most of all that this iconic resort town has to offer. Whether it's great food and wine, shopping or adventure you're after, Queenstown has something just for you.





# Authentic FLAVOURS

SET OFF ON A JOURNEY OF GASTRONOMIC DISCOVERY

Delicious flavours and memorable dining experiences. Meals are often a defining aspect of holidays, and great cuisine is an integral part of every destination.

#### **Fresh Produce, Local Flavours**

Rich in healthy soil, New Zealand is renowned for growing and farming delicious seasonal produce. And thanks to these abundant natural resources, you'll be able to enjoy a host of exclusive dining events in remarkable locations, each of which celebrates the special flavours of a special country.

#### **Delicious Everyday Dining**

Each morning begins with a hearty breakfast, and for lunch, you'll discover

local fare in your free time. Many dinners are also included, and your Tour Director is always on hand to offer a recommendation on those nights when you head off on your own.

#### **Warm Welcomes and Farewells**

Enjoy a proper introduction and the chance to say goodbye with a memorable meal. At your hotel you'll mingle with new-found friends over a Welcome Dinner. And you'll also tie off your holiday with a special Farewell Dinner.





Savour local produce throughout your journey



Ride the Skyline Gondola to lunch



Experience Māori culture at a Hangi feast

## INSIDER EXPERIENCES ☆

We know that excellent food can make or break a destination. With this in mind, we have included a handful of delicious culinary experiences which help you savour the unique nature of the country.

### Hangi Feast, Rotorua ☆

Experience the true warmth and generosity at the heart of Māori culture on a visit to Te Puia in Rotorua. Te Puia is New Zealand's premier cultural centre, preserving and promoting Māori traditions

and culture. All tours on the North Island include a traditional Hangi feast, which include a welcome with a Haka pōwhiri (cultural welcome), dance performances and the sharing of a traditional meal of fish, lamb and vegetables slow-cooked in earth ovens known as Hangi.

### Skyline Gondola Lunch, Queenstown ☆

Ride the gondola 450 metres above Queenstown to the top of Bob's Peak for a lunch at Stratosfare Restaurant. Great food and stunning panoramic views

of Lake Wakatipu and The Remarkables mountain range are your reward.

### Farewell Dinner, Lake Tekapo ☆

Say 'ka kite ano' (see you again) to New Zealand and your fellow travellers at a special dinner at Rakinui Restaurant at Peppers Bluewater Resort on the shores of Lake Tekapo in the South Island's sublime Mackenzie Basin. Enjoy exquisite locally inspired cuisine prepared by world-class chefs as you celebrate the end of your Kiwi adventure with new-found friends.





# Traveller Club

A CLUB THAT TAKES YOU FURTHER

Welcome to Traveller Club – our member-only loyalty program. Traveller Club is free for anyone to join and members have access to exclusive benefits, whether or not you have toured with us previously. Every time you travel with us, you rise through the membership tiers, so not only do you enjoy unforgettable travel experiences throughout the world, you unlock exciting new benefits after every trip.



Welcome Home  
voucher



Friends & Family  
voucher



Private airport  
transfers



Overnight  
hotel stays



Custom-made  
travel accessories



Exclusive offers  
just for you



First access – be the  
first to hear about new  
travel experiences



Member-only  
competitions  
and events



Priority member  
reservations line



24/7  
online access  
to Traveller Club

**TRAVELMARVEL**



Travel More

Join for free by scanning this QR code  
or visit [travelmarvel.com.au/club](https://travelmarvel.com.au/club)







Bay of Islands, North Island

### 15 Day New Zealand Getaway (NT15)



### 13 Day Incredible New Zealand (NT13R)



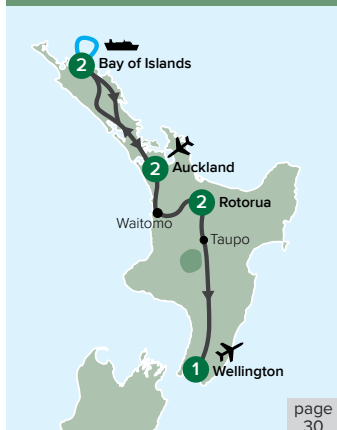
### 12 Day New Zealand Discoverer (NTA12)



### 8 Day Southern Escape (NTCC8)



### 8 Day Northern Explorer (NTAW8)



### 5 Day Bay of Islands (NTB5)



### 15 Day New Zealand Rail Adventure (NTR15)







\*Earlybird Specials are strictly limited seats on set departures, and are subject to availability at time of booking. Earlybird savings are not combinable unless specified, are valid on new bookings only and are not valid in conjunction with any other offer. Offers may be withdrawn at any time. **SAVE UP TO \$800 PER COUPLE:** Offer applicable to all New Zealand holidays listed in the Travelmarvel 2023/24 New Zealand brochure. Savings amount

# Earlybird OFFERS

HURRY – STRICTLY LIMITED OFFERS!

**BOOK TODAY\***

Limited offers  
available until  
31 May 2023

## SAVE UP TO \$800 PER COUPLE\*

Offer valid on all tours departing in 2023/24.  
Refer to itinerary pages for relevant discounts.

THE OFFER ABOVE IS COMBINABLE WITH THE FOLLOWING TWO OFFERS:

## TRAVEL WITH FRIENDS DISCOUNT OF UP TO \$300\* PER COUPLE

When six or more people book a Travelmarvel New Zealand holiday together, you'll save:

- On holidays of 13 days or more, save \$150 per person\*
- On holidays of up to 12 days, save \$50 per person\*

## EARLY PAYMENT DISCOUNT OF UP TO \$400\* PER COUPLE

Book and pay in full 10 months prior to departure and you'll save:

- On holidays of 13 days or more, save \$200 per person\*
- On holidays of up to 12 days, save \$100 per person\*





Aoraki Mount Cook, New Zealand's highest peak





# New Zealand Land Journeys

Where spectacular natural wonders  
meet fascinating culture

Discover a myriad of attractions, from natural beauty  
to captivating history, on both of New Zealand's islands.

## **NORTH ISLAND**

Whether it's the harbourside 'City of Sails', Auckland, or the geothermal pools and geysers of Rotorua, the North Island is oozing with incredible experiences. Sail across the sub-tropical Bay of Islands or meet a sheep-shearer at the Agrodome. Learn the Māori haka or hunt down the best eats in the capital, Wellington. And for *The Lord of the Rings* fans, the rural landscapes of the North Island are a tantalising mirror of Middle-earth.

## **CULTURAL WONDER**

Beyond the skyscrapers of Auckland and Wellington, you'll discover a hub of fascinating culture and friendly people. Experience the warmth of Māori hospitality in Rotorua and appreciate ancient rituals including the Hangi feast and the fierce haka war dance.

## **BAY OF ISLANDS**

The sub-tropical surrounds of the Bay of Islands make for a superb destination on any New Zealand adventure. Watch out for sea life on a cruise at the tip of the Cape Brett Peninsula and pass through the iconic Hole in the Rock.

## **SOUTH ISLAND**

Experience nature at its finest on the South Island. From the lush woodlands and towering mountain

peaks of Aoraki/Mount Cook National Park to the stunning scenery of the west coast, the South Island provides an array of strikingly dramatic terrain. And the South Island's scenic cities of Christchurch, Queenstown and Dunedin are picturesque hubs of colour and culture.

## **MARLBOROUGH AND QUEEN CHARLOTTE SOUNDS**


Making your way from the North Island to the South Island will be one of your favourite parts of your holiday thanks to the Interislander Ferry. The spectacular trip through the Marlborough and Queen Charlotte sounds is regarded as one of the most picturesque ferry rides in the world.

## **MILFORD SOUND**

New Zealand's most famous natural beauty, Milford Sound is the pinnacle of lovely Fiordland National Park. See Mitre Peak in all its splendour and go for a cruise along the full 16 kilometres of the breathtaking fiord.

## **LAKE TEKAPO**

Glorious by day and even more beautiful at night, Lake Tekapo is one of the South Island's most beloved treasures. Relax on the shore beside turquoise waters, and later gaze at the symphony of stars lighting up the dazzling night sky.







# New Zealand Getaway



## Auckland to Christchurch 15 Days

### INSIDER EXPERIENCES

- ☆ Take a cruise to Cape Brett in the Bay of Islands
- ☆ Visit Waitomo's glow worm caves
- ☆ Dine in traditional style with a Hangi feast in Rotorua
- ☆ Cruise the Cook Strait on the Interislander Ferry
- ☆ Ride the iconic TranzAlpine train to Arthur's Pass
- ☆ Bask in idyllic views during your special stay at Copthorne Hotel & Apartments Queenstown Lakeview
- ☆ Ride by gondola to Bob's Peak for lunch with a view
- ☆ Cruise Milford Sound and enjoy spectacular scenery
- ☆ Experience stunning views in Aoraki/Mount Cook National Park
- ☆ Stay on the shores of Lake Tekapo and indulge in a Farewell Dinner

### HIGHLIGHTS & INCLUSIONS

- ✓ 14 nights in premium accommodation
- ✓ Services of a Travelmarvel Tour Director and experienced Driver
- ✓ Premium air-conditioned coach travel
- ✓ 22 delicious meals – 14 breakfasts (B), 1 lunch (L) and 7 dinners (D)
- ✓ Special Welcome and Farewell Dinners
- ✓ All sightseeing, cruises, tours and entrance fees as specified
- ✓ Airport transfers on the first and last day

### Day 1. Arrive Auckland

Your journey begins on arrival in Auckland. You'll be met and transferred to your premium hotel.  
**Stay:** Sudima Auckland.

### Day 2. Auckland, Bay of Islands

On the way to the Bay of Islands, stop to see a mighty Kauri tree. Enjoy a Welcome Dinner tonight.  
**Two Nights:** Copthorne Hotel & Resort Bay of Islands or Kingsgate Autolodge. BD

**Day 3. Bay of Islands** The Bay of Islands is home to 144 islands providing a stunning aquatic playground off the coast of the North Island. Enjoy a day at leisure to explore the stunning region at your own pace. B

### Day 4. Bay of Islands, Auckland

Head out on a spectacular cruise to Cape Brett in the Bay of Islands and the famous Hole in the Rock. Return to Auckland by coach.  
**Stay:** Sudima Auckland. BD

### Day 5. Auckland, Waitomo,

**Rotorua** Discover the famous glow worm caves at Waitomo before arriving in Rotorua. Visit Te Puia, New Zealand's premier cultural centre, and tour the Māori Arts

& Crafts Institute. While here you'll see the Whakarewarewa Thermal Valley. Enjoy a Māori Hangi feast.  
**Two Nights:** Sudima Rotorua. BD

**Day 6. Rotorua** Rotorua is renowned for its geothermal geysers, Māori culture and rich heritage. Today you'll visit the Agrodome to meet the animals and learn about life in rural New Zealand. Enjoy the remainder of the day at leisure. B

**Day 7. Rotorua, Taupo, Wellington** Stop at Lake Taupo and Huka Falls as you travel the Thermal Explorer Highway on the way to Wellington.  
**Stay:** Wellington, Travelodge Hotel Wellington. B

### Day 8. Wellington, Christchurch

Enjoy one of the world's most scenic voyages on the Interislander Ferry. Continue to Christchurch.  
**Stay:** Quality Elms Hotel Christchurch. BD

### Day 9. Christchurch, Fox Glacier

Step aboard the TranzAlpine train for a stunning journey across the Southern Alps, then take a coach to glacier country.  
**Stay:** Heartland Hotel Fox Glacier. BD





Majestic, magnificent Milford Sound

**Day 10. Fox Glacier, Queenstown**

Travel to Queenstown then settle in for a relaxing two-night stay overlooking Lake Wakatipu.

Two Nights: Copthorne Hotel & Apartments Queenstown Lakeview. B

**Day 11. Queenstown**

Ride the Skyline Gondola above the city to Bob's Peak for lunch at the Stratosfare Restaurant. With free time this afternoon, perhaps try a Select Experience (see page 36). BL

**Day 12. Queenstown, Milford Sound, Te Anau**

Follow The Remarkables and Lake Wakatipu to the incredible Fiordland National Park. Then, cruise the full length of magnificent Milford Sound.

Stay: Kingsgate Hotel Te Anau. BD

**Day 13. Te Anau, Dunedin**

Journey through the stunning Southland countryside en route to vibrant Dunedin on the east coast where you'll set off on a tour. Stay: Scenic Hotel Dunedin City. B

**Day 14. Dunedin, Aoraki/Mount Cook, Lake Tekapo**

See the Moeraki Boulders and visit Oamaru. View Aoraki/Mount Cook, then arrive at Peppers Bluewater Resort for a Farewell Dinner.

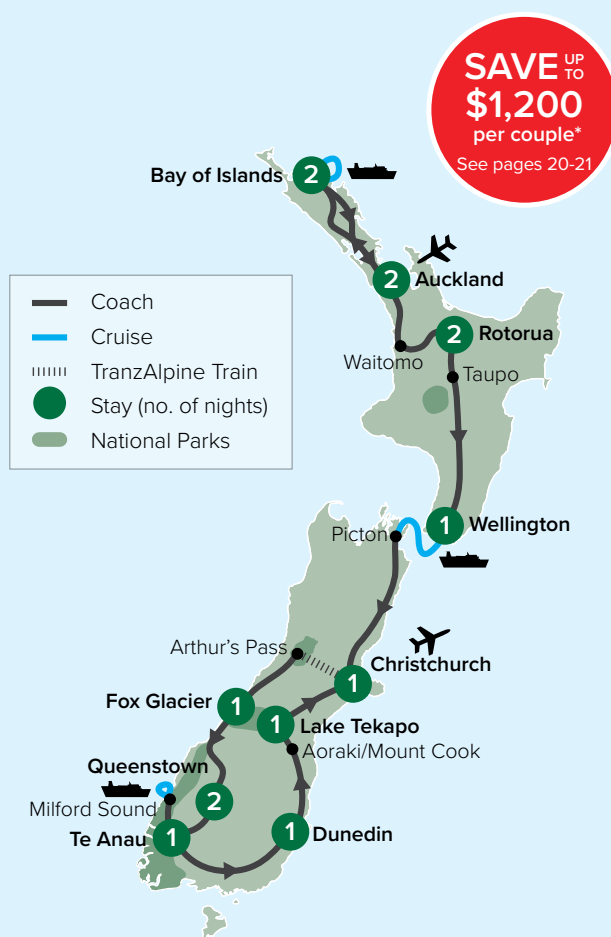
Stay: Lake Tekapo, Peppers Bluewater Resort. BD

**Day 15. Lake Tekapo, Depart Christchurch**

Visit the beautiful Church of the Good Shepherd on the shores of Lake Tekapo before continuing to Christchurch where your journey comes to an end. B



TransAlpine Train

From **\$5,395** per person, twin share**15 Days – Auckland to Christchurch (NT15)****2023 Dates and Prices (A\$)**

Per person twin share	Best Price From*	Standard Price From
Jan. <b>7, 21</b> .	<b>\$5,995</b>	\$6,395
Feb. <b>12, 18, 25</b> .	<b>\$5,995</b>	\$6,395
Mar. <b>4, 11, 18</b> .	<b>\$5,995</b>	\$6,395
Apr. <b>1, 15, 29</b> ; May <b>6, 20</b> .	<b>\$5,395</b>	\$5,795
Sep. <b>2, 23, 30</b> ; Oct. <b>21, 28</b> .	<b>\$6,095</b>	\$6,695
Nov. <b>18, 25</b> ; Dec. <b>16</b> .	<b>\$6,095</b>	\$6,695

**2024 Dates and Prices**

Jan. <b>6, 13</b> .	<b>\$6,095</b>	\$6,695
Feb. <b>3, 10</b> ; Mar. <b>2, 9</b> .	<b>\$6,095</b>	\$6,695
Apr. <b>6, 27</b> .	<b>\$5,695</b>	\$6,295
May <b>25</b> .	<b>\$5,695</b>	\$6,295
Sep. <b>7, 21, 28</b> .	<b>\$6,195</b>	\$6,795
Oct. <b>19</b> .	<b>\$6,195</b>	\$6,795
Nov. <b>2, 16, 30</b> ; Dec. <b>14</b> .	<b>\$6,195</b>	\$6,795

\*Best Price – Includes Earlybird Savings and/or Early Payment Discount, for full terms and conditions see pages 20-21.

**Bold dates indicate guaranteed departure.**  
Solo travellers please enquire for details.

**Trip Notes**

Itinerary effective 2 September 2023 – 25 May 2024. Tours departing outside these dates follow a different itinerary – please enquire for details. From pricing is based on departure 1 April 2023. Senior Card holders and Aust/NZ pensioners deduct \$75. See terms and conditions towards the back of the brochure.

For a detailed day-by-day itinerary, up-to-date prices, savings and departure dates, scan this QR code with your phone or device.

–OR–

Search **NT15** on [travelmarvel.com.au](https://travelmarvel.com.au)







# Incredible New Zealand

## Christchurch to Auckland 13 Days



### INSIDER EXPERIENCES

- ☆ Experience stunning views in Aoraki/Mount Cook National Park
- ☆ Stay on the shores of Lake Tekapo
- ☆ Cruise Milford Sound and enjoy spectacular scenery
- ☆ Bask in idyllic views during your special stay at Copthorne Hotel & Apartments Queenstown Lakeview
- ☆ Ride by gondola to Bob's Peak for lunch with a view
- ☆ Ride the iconic TranzAlpine train from Arthur's Pass to Christchurch
- ☆ Cruise the Cook Strait on the Interislander ferry
- ☆ Dine in traditional style with a Hangi feast in Rotorua
- ☆ Visit Waitomo's glow worm caves

### HIGHLIGHTS & INCLUSIONS

- ✓ 12 nights in premium accommodation
- ✓ Services of a Travelmarvel Tour Director and experienced Driver
- ✓ Premium air-conditioned coach travel
- ✓ 20 delicious meals – 12 breakfasts (B), 1 lunch (L) and 7 dinners (D)
- ✓ Special Welcome and Farewell Dinners
- ✓ All sightseeing, cruises, tours and entrance fees as specified
- ✓ Airport transfers on the first and last day

#### Day 1. Arrive Christchurch

Your journey begins on arrival in Christchurch. You'll be met and transferred to your premium hotel.  
**Stay:** Quality Hotel Elms, Christchurch. D

#### Day 2. Aoraki/Mount Cook, Lake Tekapo

Follow the shoreline of Lake Pukaki to New Zealand's highest peak, Aoraki/Mount Cook. Later, head to Lake Tekapo and visit the Church of Good Shepherd.  
**Stay:** Lake Tekapo, Peppers Bluewater Resort. BD

#### Day 3. Oamaru, Moeraki Boulders, Dunedin

Travel through Oamaru to Moeraki Boulders, unusually large spherical boulders stretched across Koekohe Beach. Continue to Dunedin, enjoying views of majestic mountains and the sweeping stillness resting on farmlands and fields along the way.  
**Stay:** Scenic Hotel Dunedin City. B

**Day 4. Dunedin, Te Anau** Enjoy a guided tour of Dunedin, the quirky and historic harbour city set in and around what was once a volcanic crater. One of New Zealand's first three cities, Dunedin is renowned for its rich and interesting architecture, warm and friendly locals, and unique wildlife. It's also home to the world's steepest

street. Later, head to the picturesque little town of Te Anau on the shore of the beautiful lake of the same name.

**Stay:** Kingsgate Hotel Te Anau. BD

#### Day 5. Te Anau, Milford Sound, Queenstown

Travel deep into the incredible Fiordland National Park for a visit to what Rudyard Kipling famously described as the 'eighth wonder of the world,' Milford Sound. Enjoy an unforgettable Insider Experience on a cruise along the full length of the World Heritage-listed fiord beneath hulking mountains, stunning waterfalls and pristine beauty at every angle. Later, travel to New Zealand's adventure capital, the irrepressibly beautiful Queenstown on Lake Wakatipu.

**Stay:** Two Nights, Copthorne Hotel & Apartments Queenstown Lakeview. B

**Day 6. Queenstown** Soar to the top of a Queenstown peak for lunch with a view as all of Queenstown spreads below you. Enjoy the rest of the day at leisure. You'll find plenty to see and do in and around Queenstown, not least sitting back somewhere comfortable and enjoying the magnificent views. BL





Lake Tekapo is the perfect place to unwind

#### Day 7. Queenstown, Fox Glacier

The stunning drive across Haast Pass brings you to the Fox and Franz Josef glaciers in the Southern Alps. Fox Glacier is also the name of the village. Both Fox and Franz Josef glaciers go well below the snowline and into temperate rainforest to around just 30 metres above sea level.

**Stay:** Heartland Hotel Fox Glacier. BD

#### Day 8. Fox Glacier, TranzAlpine Train, Christchurch

Drive through the sublime Southern Alps passing spectacular lakes and rainforests en route to the TranzAlpine Train for your Insider Experience before heading to Christchurch.

**Stay:** Christchurch, Quality Elms Hotel. BD

#### Day 9. Christchurch, Interislander, Wellington

Journey north to the port town of Picton where your ferry awaits. Sail through the stunning waters of Queen Charlotte Sound and Tory Channel before crossing Cook Strait to New Zealand's capital of cool, Wellington, where your North Island adventure begins.

**Stay:** Travelodge Hotel Wellington. B

#### Day 10. Wellington, Taupo, Rotorua

Visit New Zealand's largest lake, Lake Taupo then witness the thundering power of Huka Falls before an authentic Hangi feast in Rotorua.

**Stay:** Two Nights, Sudima Rotorua. BD

**Day 11. Rotorua, Agrodome** Your sightseeing continues with a visit to the Agrodome for a unique New Zealand farm experience.

Later, you may perhaps enjoy a visit to the Hobbiton movie set from the Lord of the Rings series (own expense). B

#### Day 12. Rotorua, Waitomo, Auckland

Travel to the lush Waitomo hills to explore the famous glow worm caves, then continue to cosmopolitan Auckland, known as the City of Sails. This evening, share stories as you enjoy a special Farewell Dinner with your fellow travellers.

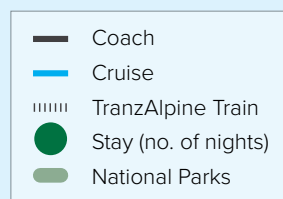
**Stay:** Sudima Auckland. BD

#### Day 13. Depart Auckland

After breakfast, you will be transferred to the airport where your journey comes to an end. B



Māori House, Rotorua



**SAVE UP TO \$1,200 per couple\***  
See pages 20-21

From **\$4,795** per person, twin share

#### 13 Days – Christchurch to Auckland (NT13R)

##### 2023 Dates and Prices (A\$)

Per person twin share	Best Price From*	Standard Price From
Sep. 17.	<b>\$5,195</b>	\$5,795
Oct. 8, 15.	<b>\$5,195</b>	\$5,795
Nov. 5, 12.	<b>\$5,195</b>	\$5,795
Dec. 3, 10, 31.	<b>\$5,195</b>	\$5,795

##### 2024 Dates and Prices

Jan. 21, 28.	<b>\$5,195</b>	\$5,795
Feb. 18, 25.	<b>\$5,195</b>	\$5,795
Mar. 17, 24.	<b>\$5,195</b>	\$5,795
Apr. 21; May 12.	<b>\$4,795</b>	\$5,395
Jun. 9.	<b>\$4,795</b>	\$5,395
Sep. 22.	<b>\$5,295</b>	\$5,895
Oct. 6, 13.	<b>\$5,295</b>	\$5,895
Nov. 3, 17.	<b>\$5,295</b>	\$5,895
Dec. 1, 15, 29.	<b>\$5,295</b>	\$5,895

\*Best Price – Includes Earlybird Savings and/or Early Payment Discount, for full terms and conditions see pages 20-21.

**Bold dates indicate guaranteed departure.**  
Solo travellers please enquire for details.

#### Trip Notes

Itinerary effective 17 September 2023 – 9 June 2024. Tours departing outside these dates follow a different itinerary – please enquire for details. From pricing is based on departure 21 April 2024. Senior Card holders and Aust/NZ pensioners deduct \$75. See terms and conditions towards the back of the brochure.

For a detailed day-by-day itinerary, up-to-date prices, savings and departure dates, scan this QR code with your phone or device.

–OR–

Search **NT13R** on [travelmarvel.com.au](https://travelmarvel.com.au)





**SAVE UP TO**  
**\$400**  
per couple\*  
See pages 20-21

New Zealand's adventure capital, Queenstown

# New Zealand Discoverer



## Auckland to Christchurch 12 Days

### INSIDER EXPERIENCES

- ☆ Visit Waitomo's glow worm caves
- ☆ Dine in traditional style with a Hangi feast in Rotorua
- ☆ Cruise the Cook Strait on the Interislander Ferry
- ☆ Ride the iconic TranzAlpine train to Arthur's Pass
- ☆ Bask in idyllic views during your special stay at Copthorne Hotel & Apartments Queenstown Lakeview
- ☆ Ride by gondola to Bob's Peak for lunch with a view
- ☆ Cruise Milford Sound and enjoy spectacular scenery
- ☆ Experience stunning views at Aoraki/Mount Cook National Park
- ☆ Stay on the shores of Lake Tekapo and indulge in a Farewell Dinner

### HIGHLIGHTS & INCLUSIONS

- ✓ 11 nights in premium accommodation
- ✓ Services of a Travelmarvel Tour Director and experienced Driver
- ✓ Premium air-conditioned coach travel
- ✓ 18 delicious meals – 11 breakfasts, 1 lunch and 6 dinners
- ✓ A special Farewell Dinner
- ✓ All sightseeing, cruises, tours and entrance fees as specified
- ✓ Airport transfers on the first and last day

### TRIP OVERVIEW

Day	Destination
01	Auckland
02	Auckland – Waitomo – Māori Cultural Experience – Rotorua
03	Agrodome – Rotorua
04	Rotorua – Wellington
05	Wellington – Interislander Ferry – Christchurch
06	Christchurch – TranzAlpine Train – Fox Glacier
07	Fox Glacier – Queenstown
08	Queenstown – Skyline Gondola
09	Queenstown – Milford Sound – Te Anau
10	Te Anau – Dunedin
11	Dunedin – Aoraki/Mount Cook – Lake Tekapo
12	Lake Tekapo – Christchurch



From **\$4,695** per person, twin share

### 12 Days – Auckland to Christchurch (NTA12)

2023 Dates and Prices (A\$)	Best Price From*	Standard Price From
Per person twin share		
Jan. 10, 24; Feb. 15, 21, 28.	\$5,095	\$5,195
Mar. 7, 14, 21.	\$5,095	\$5,195
Apr. 4, 18; May 2, 9, 23.	\$4,695	\$4,795
Sep. 5, 26; Oct. 3, 24, 31.	\$5,295	\$5,495
Nov. 21, 28; Dec. 19.	\$5,295	\$5,495
2024 Dates and Prices		
Jan. 9, 16; Feb. 6, 13.	\$5,295	\$5,495
Mar. 5, 12.	\$5,295	\$5,495
Apr. 9, 30; May 28.	\$5,095	\$5,295
Sep. 10, 24; Oct. 1, 22.	\$5,345	\$5,545
Nov. 5, 19.	\$5,345	\$5,545
Dec. 3, 17.	\$5,345	\$5,545

\*Best Price – Includes Earlybird Savings and/or Early Payment Discount, for full terms and conditions see pages 20-21.

**Bold dates indicate guaranteed departure.**  
Solo travellers please enquire for details.

### Trip Notes

Itinerary effective 5 September 2023 – 28 May 2024. Tours departing outside these dates follow a different itinerary – please enquire for details. This tour forms part of the New Zealand Getaway (NT15), pages 24-25. From fares are based on departure 4 April 2023. Senior Card holders and Aust/NZ pensioners deduct \$50. See terms and conditions towards the back of the brochure.

For a detailed day-by-day itinerary, up-to-date prices, savings and departure dates, scan this QR code with your phone or device.

–OR–

Search **NTA12** on [travelmarvel.com.au](https://travelmarvel.com.au)





**SAVE** UP TO  
**\$400**  
per couple\*  
See pages 20-21

The tiny Church of the Good Shepherd

## Southern Escape

### Christchurch Return 8 Days



#### INSIDER EXPERIENCES

- ☆ Ride the iconic TranzAlpine train to Arthur's Pass
- ☆ Bask in idyllic views during your special stay at Copthorne Hotel & Apartments Queenstown Lakeview
- ☆ Ride by gondola to Bob's Peak for lunch with a view
- ☆ Cruise Milford Sound and enjoy spectacular scenery
- ☆ Experience stunning views at Aoraki/Mount Cook National Park
- ☆ Stay on the shores of Lake Tekapo and indulge in a Farewell Dinner

#### HIGHLIGHTS & INCLUSIONS

- ✓ Seven nights in premium accommodation
- ✓ Services of a Travelmarvel Tour Director and experienced Driver
- ✓ Premium air-conditioned coach travel
- ✓ 12 delicious meals – 7 breakfasts, 1 lunch and 4 dinners
- ✓ A special Farewell Dinner
- ✓ All sightseeing, cruises, tours and entrance fees as specified
- ✓ Airport transfers on the first and last day

#### TRIP OVERVIEW

Day	Destination
01	Christchurch
02	Christchurch – TranzAlpine Train – Fox Glacier
03	Fox Glacier – Queenstown
04	Queenstown – Skyline Gondola
05	Queenstown – Milford Sound – Te Anau
06	Te Anau – Dunedin
07	Dunedin – Aoraki/Mount Cook – Lake Tekapo
08	Lake Tekapo – Christchurch



From **\$3,095** per person, twin share

#### 8 Days – Christchurch Return (NTCC8)

2023 Dates and Prices (A\$) Per person twin share	Best Price From*	Standard Price From
Jan. <b>14, 28</b> ; Feb. <b>19, 25</b> .	<b>\$3,395</b>	\$3,495
Mar. 4, <b>11, 18, 25</b> .	<b>\$3,395</b>	\$3,495
Apr. <b>8, 22</b> ; May 6, <b>13, 27</b> .	<b>\$3,095</b>	\$3,195
Sep. 9, <b>30</b> ; Oct. 7, <b>28</b> .	<b>\$3,495</b>	\$3,695
Nov. 4, <b>25</b> ; Dec. 2, 23.	<b>\$3,495</b>	\$3,695

#### 2024 Dates and Prices

Jan. <b>13, 20</b> ; Feb. 10, 17.	<b>\$3,495</b>	\$3,695
Mar. <b>9, 16</b> .	<b>\$3,495</b>	\$3,695
Apr. <b>13</b> ; May 4; Jun. 1.	<b>\$3,295</b>	\$3,495
Sep. 14, 28; Oct. 5, 26.	<b>\$3,545</b>	\$3,745
Nov. 9, 23; Dec. 7, 21.	<b>\$3,545</b>	\$3,745

\*Best Price – Includes Earlybird Savings and/or Early Payment Discount, for full terms and conditions see pages 20-21.

**Bold dates indicate guaranteed departure.**  
Solo travellers please enquire for details.

#### Trip Notes

Itinerary effective 9 September 2023 – 1 June 2024. Tours departing outside these dates follow a different itinerary – please enquire for details. This tour forms part of the New Zealand Getaway (NT15), pages 24-25. From fares are based on departure 8 April 2023. Senior Card holders and Aust/NZ pensioners deduct \$50. See terms and conditions towards the back of the brochure.

For a detailed day-by-day itinerary, up-to-date prices, savings and departure dates, scan this QR code with your phone or device.

–OR–

Search **NTCC8** on [travelmarvel.com.au](https://travelmarvel.com.au)







SAVE UP TO  
**\$400**  
per couple\*  
See pages 20-21

Wai-O-Tapu Thermal Wonderland, Rotorua

# Northern Explorer

## Auckland to Wellington 8 Days



### INSIDER EXPERIENCES

- ☆ Take a cruise to Cape Brett in the Bay of Islands
- ☆ Visit Waitomo's glow worm caves
- ☆ Dine in traditional style with a Hangi feast in Rotorua

### HIGHLIGHTS & INCLUSIONS

- ✓ Seven nights in premium accommodation
- ✓ Services of a Travelmarvel Tour Director and experienced Driver
- ✓ Premium air-conditioned coach travel
- ✓ 10 delicious meals – 7 breakfasts and 3 dinners
- ✓ A special Welcome Dinner
- ✓ All sightseeing, cruises, tours and entrance fees as specified
- ✓ Airport transfers on the first and last day

### TRIP OVERVIEW

Day	Destination
01	Auckland
02	Auckland – Bay of Islands
03	Bay of Islands
04	Bay of Islands – Hole in the Rock – Auckland
05	Auckland – Waitomo – Māori Cultural Experience – Rotorua
06	Rotorua – Agrodome – Rotorua
07	Rotorua – Taupo – Wellington
08	Wellington



Waitomo Caves



From **\$2,695** per person, twin share

### 8 Days – Auckland to Wellington (NTAW8)

2023 Dates and Prices (A\$) Per person twin share	Best Price From*	Standard Price From
Jan. <b>7, 21</b> ; Feb. <b>12, 18, 25</b> .	<b>\$2,995</b>	\$3,095
Mar. <b>4, 11, 18</b> .	<b>\$2,995</b>	\$3,095
Apr. <b>1, 15, 29</b> ; May <b>6, 20</b> .	<b>\$2,695</b>	\$2,795
Sep. 2, <b>23, 30</b> ; Oct. <b>21, 28</b> .	<b>\$2,995</b>	\$3,195
Nov. <b>18, 25</b> ; Dec. 16.	<b>\$2,995</b>	\$3,195
2024 Dates and Prices		
Jan. <b>6, 13</b> ; Feb. 3, 10.	<b>\$2,995</b>	\$3,195
Mar. <b>2, 9</b> .	<b>\$2,995</b>	\$3,195
Apr. <b>6, 27</b> ; May 25.	<b>\$2,795</b>	\$2,995
Sep. 7, 21, 28; Oct. 19.	<b>\$3,045</b>	\$3,245
Nov. 2, 16, 30; Dec. 14.	<b>\$3,045</b>	\$3,245

\*Best Price – Includes Earlybird Savings and/or Early Payment Discount, for full terms and conditions see pages 20-21.

**Bold dates indicate guaranteed departure.**  
Solo travellers please enquire for details.

### Trip Notes

Itinerary effective 2 September 2023 – 25 May 2024. Tours departing outside these dates follow a different itinerary – please enquire for details. This tour forms part of the New Zealand Getaway (NT15), pages 24-25. From fares are based on departure 1 April 2023. Senior Card holders and Aust/NZ pensioners deduct \$50. See terms and conditions towards the back of the brochure.

For a detailed day-by-day itinerary, up-to-date prices, savings and departure dates, scan this QR code with your phone or device.

–OR–

Search **NTAW8** on [travelmarvel.com.au](https://travelmarvel.com.au)



**SAVE** UP TO  
**\$200**  
 per couple\*  
 See pages 20-21



The Hole in the Rock

# Bay of Islands



## Auckland Return 5 Days

### INSIDER EXPERIENCES

- ☆ Take a cruise to Cape Brett in the Bay of Islands

### HIGHLIGHTS & INCLUSIONS

- ✓ Four nights in premium accommodation
- ✓ Services of a Travelmarvel Tour Director and experienced Driver
- ✓ Premium air-conditioned coach travel
- ✓ Six delicious meals – 4 breakfasts and 2 dinners
- ✓ A special Welcome Dinner
- ✓ All sightseeing, cruises, tours and entrance fees as specified
- ✓ Airport transfers on the first and last day

### TRIP OVERVIEW

Day	Destination
01	Auckland
02	Auckland – Bay of Islands
03	Bay of Islands
04	Bay of Islands – Hole in the Rock – Auckland
05	Auckland



Bay of Islands



From **\$1,595** per person, twin share

### 5 Days – Auckland Return (NTB5)

2023 Dates and Prices (A\$)	Best Price From*	Standard Price From
Per person twin share		
Jan. <b>7, 21</b> ; Feb. <b>12, 18, 25</b> .	–	\$1,645
Mar. <b>4, 11, 18</b> ; Apr. <b>1, 15, 29</b> ; May <b>6, 20</b> .	–	\$1,645
Sep. <b>2, 23, 30</b> ; Oct. <b>21, 28</b> .	<b>\$1,595</b>	\$1,695
Nov. <b>18, 25</b> ; Dec. <b>16</b> .	<b>\$1,595</b>	\$1,695

### 2024 Dates and Prices

Jan. <b>6, 13</b> ; Feb. <b>3, 10</b> .	<b>\$1,595</b>	\$1,695
Mar. <b>2, 9</b> .	<b>\$1,595</b>	\$1,695
Apr. <b>6, 27</b> ; May <b>25</b> .	<b>\$1,595</b>	\$1,695
Sep. <b>7, 21, 28</b> ; Oct. <b>19</b> .	<b>\$1,595</b>	\$1,695
Nov. <b>2, 16, 30</b> ; Dec. <b>14</b> .	<b>\$1,595</b>	\$1,695

\*Best Price – Includes Earlybird Savings and/or Early Payment Discount, for full terms and conditions see pages 20-21.

**Bold dates indicate guaranteed departure.**  
 Solo travellers please enquire for details.

### Trip Notes

Itinerary effective 2 September 2023 – 25 May 2024. Tours departing outside these dates follow a different itinerary – please enquire for details. This tour forms part of the New Zealand Getaway (NT15), pages 24-25. From fares are based on departure 23 September 2023. Senior Card holders and Aust/NZ pensioners deduct \$50. See terms and conditions towards the back of the brochure.

For a detailed day-by-day itinerary, up-to-date prices, savings and departure dates, scan this QR code with your phone or device.

–OR–

Search **NTB5** on [travelmarvel.com.au](https://travelmarvel.com.au)







# New Zealand by Rail

Breathtaking scenery experienced  
exactly the way it should be

Steaming geysers and rolling mountainsides – the  
enthraling landscapes of Aotearoa, the Land of the  
Long White Cloud, are found at every twist and turn.

## **NORTH ISLAND WONDERS**

Where geothermal activity bubbles beneath the surface. Where Māori culture is rich and proud. And where pristine beaches exist beside buzzing cities in a harmony of nature and modernity. The must-see regions of the North Island are simply astounding, and exploring by rail is an enticing pastime.

### **Glenbrook Vintage Steam Train**

In a plume of smoke, be magically transported back in time on a journey aboard this beautiful vintage steam train as postcard-perfect vistas sweep past your window.

### **Rail Cruise Experience**

Jump aboard a unique hybrid vehicle for a rail journey like no other. Drive yourself through the picturesque Mamaku Ranges near Rotorua, listening to an audio commentary as you move along at 20km/h.

### **Fell Locomotive Museum**

This charming local museum is home to the world's only remaining Fell steam locomotive, which dates to 1877. The engine's innovative design allowed it to haul carriages up the steep Rimutaka Incline, using four grip wheels holding onto a raised centre rail.

## **SOUTH ISLAND SPLENDOURS**

From glacial valleys to snow-capped mountains, magical fiords and lakes, the South Island boasts some of the most stunning natural landscapes on Earth. Discover the historic hearts of beautiful cities such as Christchurch, Dunedin, Queenstown and Te Anau.

### **Coastal Pacific**

Hug the glorious Kaikoura coastline on a journey aboard the Coastal Pacific train. Large panoramic windows and an open-air viewing platform afford unobstructed views of incredible landscapes where the mountains meet the sea.

### **TranzAlpine Train**

New Zealand's finest inland rail journey takes in the countryside's breathtaking snowy mountains and rolling fields as it makes its way gracefully along the tracks. From Christchurch to Greymouth, traverse the Southern Alps and Arthur's Pass National Park, taking in the pristine farmland of the Canterbury Plains.







Experience the South Island on the TransAlpine Train





# New Zealand Rail Adventure



## Auckland to Christchurch 15 Days

### INSIDER EXPERIENCES

- ☆ Take a ride aboard the Glenbrook Vintage Steam Train
- ☆ Experience a unique self-drive rail cruise
- ☆ Dine in traditional style with a Hangi feast in Rotorua
- ☆ Board the Coastal Pacific and see the Kaikoura coast by rail
- ☆ Take the TranzAlpine train from Christchurch to Greymouth
- ☆ Ride by gondola to Bob's Peak for lunch with a view
- ☆ Cruise Milford Sound and enjoy spectacular views
- ☆ Experience stunning views in Aoraki/Mount Cook National Park

### HIGHLIGHTS & INCLUSIONS

- ✓ 14 nights in premium accommodation
- ✓ Services of a Travelmarvel Tour Director and experienced Driver
- ✓ Premium air-conditioned coach travel
- ✓ 24 delicious meals – 14 breakfasts (B), 1 lunch (L) and 9 dinners (D)
- ✓ Special Welcome and Farewell Dinners
- ✓ All sightseeing, cruises, rail travel and entrance fees as specified
- ✓ Airport transfers on the first and last day

#### Day 1. Arrive Auckland

On arrival, you'll be met and transferred to your hotel. Tonight, enjoy a Welcome Dinner.

**Two Nights:** Sudima Hotel Auckland.

D

#### Day 2. Auckland, Glenbrook Vintage Steam Train

Journey through the Franklin countryside on the Glenbrook Vintage Steam Train. Stop at the Pukeoware Depot for morning tea then return to Auckland by coach. B

#### Day 3. Auckland, Rail Cruise

**Experience, Rotorua** During a self-drive rail cruising experience, travel through the Mamaku Ranges in a hybrid vehicle with an audio guide. In Rotorua, visit Te Puia Cultural Centre, and tour the Māori Arts and Crafts Institute. This evening enjoy a Hangi feast and a Māori cultural performance. **Two Nights:** Sudima Rotorua. BD

**Day 4. Rotorua** Your sightseeing continues with a visit to one of New Zealand's best-loved attractions, the Agrodome. B

#### Day 5. Rotorua, Wellington

In the afternoon we visit the fascinating Fell Locomotive

Museum, which houses the only remaining steam-powered Fell locomotive in the world. After your visit, continue on to Wellington.

**Two Nights:** Travelodge Hotel Wellington.

BD

**Day 6. Wellington** A city tour includes New Zealand's national museum, Te Papa Tongarewa. B

#### Day 7. Wellington, Picton, Coastal Pacific Train, Christchurch

On the Interislander Ferry, cruise across Cook Strait and through the Marlborough and Queen Charlotte sounds to Picton. Join the Coastal Pacific train to Kaikoura and travel by coach to Christchurch. **Stay:** Quality Elms Hotel. BD

#### Day 8. Christchurch, TranzAlpine Train, Fox Glacier

Slice through the Southern Alps on the TranzAlpine Train. Then meet your coach at Greymouth for the trip to Fox Glacier. **Stay:** Heartland Hotel Fox Glacier. BD

#### Day 9. Fox Glacier, Queenstown

Enjoy the scenery as you travel to the alpine resort of Queenstown. **Two Nights:** Queenstown, Copthorne Hotel & Apartments Queenstown Lakeview. B



The Coastal Pacific Train hugs the Kaikoura coastline



**SAVE UP TO**  
**\$1,200**  
 per couple\*  
 See pages 20-21

#### Day 10. Queenstown

Today you have the freedom to relax or choose a Select Experience. Ride the Skyline Gondola to the top of Bob's Peak for a Buffet Lunch at Stratosfare Restaurant. The adventurous might head out on a jet boat ride through dramatic river canyons (see page 36 for details).

BL

#### Day 11. Queenstown, Milford Sound, Te Anau

Follow The Remarkables mountain range and Lake Wakatipu, and journey deep into spectacular Fiordland National Park. Enjoy one of the world's most scenic drives en route to cruise Milford Sound, a magnificent fiord with views of waterfalls, dense rainforest and sheer cliffs. Keep an eye out for penguins, seals and other wildlife as you enjoy the cruise.

Stay: Kingsgate Hotel Te Anau. BD

#### Day 12. Te Anau, Dunedin

Enjoy spectacular scenery today as you drive from Te Anau to the Scottish-flavoured southern city of Dunedin.

Stay: Scenic Hotel Dunedin City. BD

#### Day 13. Dunedin, Lake Tekapo

View the Moeraki Boulders and visit Oamaru before arriving at Lake Tekapo. Visit the tiny Church of the Good Shepherd.

Stay: Lake Tekapo, Peppers Bluewater Resort. BD

#### Day 14. Aoraki/Mount Cook, Christchurch

Head into the stunning scenery of Aoraki/Mount Cook National Park. Later, head back to Christchurch for a special Farewell Dinner with your fellow travellers.

Stay: Sudima Christchurch. BD

#### Day 15. Depart Christchurch

After breakfast, you will be transferred to the airport where your journey comes to an end with a transfer to the airport. B

### From \$5,995 per person, twin share

#### 15 Days – Auckland to Christchurch (NTR15)

##### 2023 Dates and Prices (A\$)

Per person twin share	Best Price From*	Standard Price From
Jan. 15; Feb. 12, 26; Mar. 19, 26.	\$6,295	\$6,695
Apr. 9, 23.	\$5,995	\$6,395
Sep. 9, 16; Oct. 7, 21.	\$6,595	\$7,195
Nov. 4, 18; Dec. 2, 16.	\$6,595	\$7,195

##### 2024 Dates and Prices

Jan. 6, 20; Feb. 3, 17.	\$6,595	\$7,195
Mar. 2, 16, 30; Apr. 6, 20.	\$6,595	\$7,195
May 4.	\$6,195	\$6,795
Sep. 7, 14; Oct. 5, 19.	\$6,695	\$7,295
Nov. 2, 16, 30; Dec. 14.	\$6,695	\$7,295

\*Best Price – Includes Earlybird Savings and/or Early Payment Discount, for full terms and conditions see pages 20-21.

**Bold dates indicate guaranteed departure.**  
 Solo travellers please enquire for details.

#### Trip Notes

Itinerary effective 9 September 2023 – 4 May 2024. Tours departing outside these dates follow a different itinerary – please enquire for details. From fares are based on departure 4 May 2024. Senior Card holders and Aust/NZ pensioners deduct \$75. See terms and conditions towards the back of the brochure.

For a detailed day-by-day itinerary, up-to-date prices, savings and departure dates, scan this QR code with your phone or device.

–OR–

Search **NTR15** on [travelmarvel.com.au](https://www.travelmarvel.com.au)



#### Enhance Your Journey

### Shotover Jet Boat Ride

Adventurous travellers might choose a thrilling jet boat ride through narrow river canyons near Queenstown. Replaces free time on Day 10. See page 36 for details.





# Enhance YOUR JOURNEY

DISCOVER MORE WITH OUR SELECT EXPERIENCES

Travelmarvel provides further opportunities to pursue your special interests. Here is a selection of highlights to enhance your New Zealand adventure.

## BAY OF ISLANDS



### CAPE REINGA DAY TOUR

Enjoy a day tour to New Zealand's northernmost point, Cape Reinga Lighthouse. After taking in the beautiful scenery, enjoy a fish and chips lunch.

Price per person: \$155

## FRANZ JOSEF TWIN GLACIER



### HELICOPTER RIDE

Enjoy a 30-minute helicopter ride as you fly over the West Coast glaciers. Land at the head of Franz Josef or Fox Glacier and feel the majesty of the landscape.

Price per person: \$385

## ROTORUA



### HOBBITON MOVIE SET & FARM TOUR

Enjoy a scenic drive to The Shire's Rest Cafe, where a guide will escort you through the site, visiting buildings created for the Lord of the Rings movies.

Price per person: \$220

## QUEENSTOWN



### MILLION DOLLAR CRUISE

Glide across the mystical waters of Lake Wakatipu, keeping your eyes peeled for local bird life as well as enormous trout which freely swim about the lake's waters.

Price per person: \$45

## QUEENSTOWN



### SHOTOVER JET BOAT RIDE

Those feeling adventurous can head out on a thrilling jet boat ride, roaring through narrow river canyons just centimetres from sheer rock walls.

Price per person: \$145

## QUEENSTOWN



### TSS EARNSLAW CRUISE

Join the historic steamer TSS Earnslaw on a cruise to Walter Peak Station for dinner, offering an insight into farming life in New Zealand's high country.

Price per person: \$150

**Please note:** these Select Experiences must be pre-booked prior to final payment. All other options will be booked by your friendly Tour Director who is always on hand to offer recommendations, allowing you greater flexibility of choice. All experiences are subject to availability and prices are indicative only and may be weather dependant. Prices are in A\$. Minimum and/or maximum numbers apply.



# PRE & POST Accommodation

SPEND MORE TIME EXPLORING NEW ZEALAND'S ICONIC DESTINATIONS

Extend your stay in the exciting cities of New Zealand at one of the following hotels, chosen for their style and location.

Price per person, from*	Twin Share	Solo Trav	Price per person, from*	Twin Share	Solo Trav
<b>AUCKLAND</b>			<b>CHRISTCHURCH</b>		
Sudima	\$150	\$300	Commodore Hotel Christchurch Airport	\$130	\$260
<b>WELLINGTON</b>			Quality Hotel Elms	\$95	\$190
Travelodge	\$125	\$250	Sudima	\$105	\$210

Prices are in A\$ and are for room only. \*All pre/post accommodation availability and rates are indicative only and may vary depending on seasonal events.



# General Information & Conditions

The following terms and conditions ('booking conditions') form the basis of your contract with Australian Pacific Touring Pty Ltd ("Travelmarvel", 'we' or 'our'). Please read them carefully as they set out your and our respective rights and obligations.

By asking us to confirm your booking, we are entitled to assume that you have had the opportunity to read and have read these booking conditions; that you agree to them and that you agree to them applying to your holiday arrangements booked with us and which we agree to make, provide or perform (as applicable) as part of our contract with you. References in these booking conditions to your 'holiday package' are references to the tour or cruise package you have booked with Travelmarvel. References to "excursions" are references to short trips or tours included or available as part of your holiday package.

These Terms & Conditions were correct at time of publication. For the most up to date Terms & Conditions visit our website [www.travelmarvel.com.au/legal/general-information-conditions](http://www.travelmarvel.com.au/legal/general-information-conditions)

## GOVERNING LAW

These booking conditions are governed by the law in force in Victoria, Australia.

## BEFORE YOU BOOK

### PRICE VALIDITY

Published prices are valid at the time of publication but are subject to change. They may be varied by advertising or special offers, or changed after the publication date for any reason, including without limitation; to cover changes in government taxes and charges, exchange rate or other material increases by suppliers. The most up to date pricing may be found on our website – [www.travelmarvel.com.au](http://www.travelmarvel.com.au). Prices will be confirmed at the time of booking and honoured for up to seven days.

Please see important information listed under Special Conditions for relevant deposit and final payment terms.

### TRANSFERS

Airport transfers are included on the first & last day of the tour package or with pre & post accommodation booked by Travelmarvel. No refund will be given for unused transfers. Transfers cannot be re-routed to other pick-up points or destinations. Passengers who miss the pre-booked transfers must make their own way to/from the ship/hotel at their own expense. Some holiday packages include group transfers from or in between airports/hotel/ships and vice versa. A group transfer is generally a shared transfer and the type of vehicle used will normally be dependent upon the size of the group. Combined cruise and land tours, or cruise include transfer and flights between tours as specified.

### PUBLIC HOLIDAYS & FESTIVAL

Virtually all countries have public holidays, religious or otherwise. The festivities may temporarily disrupt your holiday and some religious holidays may result in a reduction of facilities and entertainment.

### EARLYBIRD OFFERS, SUPERDEALS, FLY DEALS & SPECIAL OFFERS

Conditions Apply. For full terms and conditions relating to any Earlybird Special, Fly Deal or Special Offer on your booking, please go to [travelmarvel.com.au/specialdeals](http://travelmarvel.com.au/specialdeals).

### OTHER SPECIAL OFFERS

Special Deals and Special Offers other than those advertised herein may be promoted by Travelmarvel from time to time. These new special deals/offers do not apply to existing bookings unless otherwise stated.

### TRAVELLER CLUB

Details, including the full range of benefits and conditions, may be viewed at website at [travelmarvel.com.au/club](http://travelmarvel.com.au/club)

## BOOKING AND PAYING FOR YOUR HOLIDAY

### AIRFARES

Air travel is arranged with independent airlines. Travelmarvel will arrange air travel as advertised in connection with your holiday package or as otherwise arranged with Travelmarvel. All airfares are subject to flight and booking class availability as specified in the conditions. Airfares will be booked and ticketed upon receipt of your deposit to avoid price or tax increases. Airport taxes vary for each departure point and routing of airlines. Airline schedules are subject to change without notice. Once air tickets are issued, airline amendment and/or cancellation fees apply and, in some cases, are non-refundable. Name changes and voluntary date and schedule changes will incur fees. Travelmarvel is not liable for delays or disruptions of air travel. Once tickets are issued, Travelmarvel will have no other liability and will not be responsible for refunding the cost of any services booked in conjunction with the flights. Flying outside of the tour date range or re-routing your flight itinerary may incur additional surcharges. While we endeavour to accommodate your airline seating requests, these are never guaranteed and are subject to change at the airline's discretion.

### AIRLINE LOYALTY POINT ELIGIBILITY

Travelmarvel uses the services of a range of airlines in its packages. Travelmarvel does not warrant that its airfares attract loyalty points as airlines control the application of loyalty points in all cases. Requests to use airline points to upgrade travel need to be directed to the airline concerned by the member.

### TRAVELMARVEL DEPOSIT CANCELLATION PEACE OF MIND

Conditions apply: applicable when an upfront fee of \$95 per person is paid with your deposit. The holiday package can be cancelled prior to the final payment date and your deposit will be retained as a Travelmarvel holding credit to be used for future bookings. If Deposit Cancellation Peace of Mind is claimed, monies held must be used on a future cruise or tour and cannot be redeemed against the original cruise or tour departure date. Deposit held in credit will exclude fees imposed by third parties, including but not limited to air travel, rail travel and hotels. When booking airfares through Travelmarvel (including when taking advantage of a special

offer that includes air travel), standard airline cancellation fees will apply. In some cases, airfares will be non-refundable. In the event of cancellation, these fees will be deducted from the deposit paid, and therefore the credit being held. Travelmarvel Deposit Cancellation Peace of Mind applies to new bookings only and is only valid up until 100 days prior to travel. After three years, unused credit funds will incur the original cancellation conditions. This does not replace travel insurance, which you are required to purchase at the time of booking.

### TRAVEL INSURANCE

Travel Insurance is not included in your holiday package. For your protection we strongly recommend you purchase comprehensive travel insurance that includes (without limitation) coverage for the cost of your holiday package, medical expenses, loss of luggage, cruise and land content and airfare charges that may occur due to cancellation, impossibility of performance or other frustration, disruption, loss of deposit or strikes.

### TRAVEL INFORMATION & DOCUMENTS

After booking you will receive an invoice with all important information relevant to your holiday package. We strongly recommend you check the details carefully and read the included information. Please ensure that you check your flight timings carefully on your tickets, particularly early morning departures. Approximately 21 days before departure you will receive your e-ticket, together with your final itinerary. However, in the case of late bookings, charges or late payment, tickets may be emailed to you.

### SPECIAL REQUESTS

Where a special request (e.g. diet, room location, twin or double bedded room, a particular facility at a hotel, flight seat requests and/or particular meals), is an important factor in your choice of holiday, you must advise us when your booking is made. Travelmarvel will pass your request on to the hotel, airline or other supplier but cannot guarantee that it will be accommodated. Travelmarvel will also pass on any dietary requests to the airline but we strongly recommend that you check directly with the airline once your tickets have been issued. The provision of any special request does not constitute a term of your contract with us. Confirmation that a special request has been noted or passed on to the supplier or the inclusion of the special request on your confirmation invoice or any other documentation is not confirmation that the request will be met. Unless and until specifically confirmed, all special requests are subject to availability.

### CREDIT & DEBIT CARD SURCHARGES

If you pay Travelmarvel by credit or debit card, surcharges will apply. In the case of credit cards a surcharge of between 1% and 3% (depending on the card used), will be added to the tour price. In the case of debit cards a charge of 0.5% will be added to the tour price.

### ACCURACY

Travelmarvel has endeavoured to ensure that the information provided about accommodation, itineraries etc., is correct to the best of its knowledge at the time of publication. However, advertised descriptions and facilities and prices may change after publication. We recommend that you confirm the details of your chosen holiday package at the time of booking. Additionally, flight times, carriers and routes are given for guidance only as there may be changes. Final details will be shown on your tickets. Holiday package or excursion itineraries may change or be different from those described in our collateral as a result of local conditions, weather conditions and annual events. Travelmarvel will endeavour to notify you of any significant changes prior to your departure.

### DISRUPTION TO ITINERARY AND CRUISING ARRANGEMENTS

Itineraries are intended as a guide only and are subject to alteration without notice. Alternations may be necessary for various reasons including, without limitation, road, rail, river or weather conditions, strikes or other reasons beyond Travelmarvel's control. If conditions render any routes unsafe for navigation, Travelmarvel reserves the right to provide alternative services including, but not limited to, accommodation on the docked ship or substitute land arrangements. Under normal river conditions, itineraries will operate as far as possible as published. However, sometimes for reasons beyond our control, it may be necessary to make alterations to your itinerary. For example, without limitation, if there is a water level problem on a river, it may be necessary to operate part of the itinerary by coach and alternative sightseeing may be included. Travelmarvel will not be liable for any direct or indirect costs that you incur as a result of any event or other factor beyond our control which necessitates a change in your itinerary. Additionally, you are not entitled to any refund for any alterations to your itinerary that are caused or contributed to by any flood or water level events or such other events which are beyond our control. Travelmarvel cannot guarantee exact arrival and departure times for carriers and operators used by Travelmarvel and Travelmarvel will not be liable for failure to make connections with any other services or attractions beyond its control.

### FLIGHT CHANGES

The flight timings detailed on your confirmation invoice, or on our website are for guidance only and are subject to alteration and confirmation. Flight timings are set by airlines and affected by events outside our control. Scheduled and charter flight timings, and days of operation are also subject to change. Travelmarvel will advise you of any significant changes as soon as it is informed by the airline. Minor timing changes will be shown on your flight tickets. Any change in the identity of the airline, flight timings or aircraft type (if advised) will not entitle you to cancel or change to other arrangements without paying any applicable cancellation fees except where specified in these booking conditions.

### OUT OF DATE RANGE FLIGHTS

If airlines have not published their schedule at the time of booking, Travelmarvel will estimate the cost of airfares connected with your holiday package. When the airline

releases flight inventory and airfares, Travelmarvel will confirm booking and pricing with you by sending you an updated invoice. Once flights have been confirmed by you and payment has been received, Travelmarvel will issue your ticket/s.

### FORCE MAJEURE

Force majeure event means the occurrence of an event that is beyond Travelmarvel's reasonable control, and which could not have been reasonably prevented by Travelmarvel, which includes, but is not limited to: (a) war, armed conflict, criminal damage, riot, civil strife, industrial dispute, terrorist activity or the threat of any such acts; (b) natural disaster (including but not limited to flooding, fire, earthquake, landslide), adverse weather conditions, high or low water levels; (c) nuclear or other industrial accident causing environmental pollution or contamination; or (d) change in law, meaning, enactment, amendment (including repeal) in the law or administration of any law in Australia or any jurisdiction or territory relevant to the booking contract, which includes changes in statute, regulation, determination, by-law, declaration, licence and the common law as applicable from time to time, including changes or amendments in regulations or access to services, sites or countries caused by declared epidemic or pandemic events.

### TERMINATION OF BOOKING CONTRACT OR CHANGE OF TRAVEL ARRANGEMENTS DUE TO FORCE MAJEURE

If Travelmarvel, in its reasonable opinion, considers that any force majeure event prevents Travelmarvel (whether directly or through its employees, contractors, subcontractors and agents) from lawfully or safely providing any products or services subject of the booking contract with you, Travelmarvel may immediately by written notice: (a) terminate the booking contract (in whole or in part); or (b) change your travel arrangements as reasonably practicable to ensure your safety and invoice you for any additional costs.

### LIMITATION OF LIABILITY IN THE EVENT OF FORCE MAJEURE

In the event that Travelmarvel cancels or changes your travel arrangements in any way due to a force majeure event, Travelmarvel will not be liable to you in contract, tort, statute or restitution for any loss (including, but not limited to, loss of deposit or purchase price and loss of enjoyment), damage, costs, charges, expenses or injury resulting from or in connection with (whether directly or indirectly): (a) the cancellation or change to your travel arrangements; or (b) the force majeure event. Travelmarvel is not liable to refund any part of the deposit or purchase price paid by you if Travelmarvel subsequently changes or cancels your travel arrangements in connection with a force majeure event.

Force majeure events are unpredictable and beyond Travelmarvel's control. As you are required to purchase travel insurance to adequately protect yourself against these risks, your policy needs to respond to these risks.

You acknowledge and accept that these terms are reasonably necessary to protect the legitimate interests of Travelmarvel based on expected non-recoverable costs and expenses to be incurred by Travelmarvel, including but not limited to overhead expenses and works or services performed personally by Travelmarvel, leading up to the commencement of the holiday package, alternatively prior to the force majeure event.

### DATA PROTECTION POLICY

Any personal information (including sensitive information and health information) that Travelmarvel obtains and retains from you or about you is necessary for our business purposes. Our Privacy Policy details why we collect this information, who we may disclose it to (including overseas recipients), and the main consequences if we do not collect it. Our Privacy Policy also contains information about how you may seek access to, or correction of, the personal information held about you, and our complaint resolution procedures. Our Privacy Policy is available at [www.travelmarvel.com.au/privacy](http://www.travelmarvel.com.au/privacy) or by request to us. By providing personal or sensitive information to us, you are agreeing to the terms of our Privacy Policy.

### LIMITATION OF LIABILITY

1. Our holiday packages include the services of independent providers, such as hoteliers, airlines, cruise companies and other operators, who are not agents, servants or employees of Travelmarvel. Although we take care in selecting the independent service providers and the optional excursions conducted by some independent service providers, Travelmarvel is not responsible for the conduct of the independent service providers, their servants and agents or for any ramifications of that conduct. Optional excursions may, depending on your holiday package, include activities such as climbing, exploring, bike riding, swimming and snorkelling. You accept and assume the risk involved with these activities.

2. If, in the opinion of any representative of Travelmarvel, your mental or physical condition, or general behaviour is such as to affect your own health and safety, render you incapable to care for yourself, cause you to become a hazard to yourself or other passengers or result in you becoming objectionable to other passengers or staff, you will not be permitted to embark or continue on the whole or any part of the holiday package. Travelmarvel representatives are empowered to ask guests to depart a holiday package if they are displaying known COVID-19 symptoms. Abuse or harassment of any kind toward crew, contracted suppliers or other guests may result in immediate removal from the tour or cruise. Travelmarvel is not liable to you for any costs associated with such decision and you will not be refunded for any part of the holiday package.

3. Travelmarvel accepts no responsibility for any death, injury, illness, loss (including loss of enjoyment), damage, detention, delay (including mechanical breakdown) beyond its control.

4. Any term, condition or warranty express or implied by statute or otherwise in respect to the holiday packages contained in any of our collateral are excluded to the full extent permitted by law. Nothing in these booking conditions excludes, restricts or modifies the application of the

Competition and Consumer Act 2010 (Cth) as amended, consolidated, supplemented or replaced.

5. To the full extent permitted by law, Travelmarvel's liability arising under or in connection with these booking conditions: (a) is limited to the re-supply of the products or services or the payment of the cost of re-supply of the products or services to you; and (b) excludes liability for any indirect or consequential losses suffered by you or any third party, howsoever caused, including but not limited to pure economic loss or any special, extraordinary or punitive damage to you or any other party.

6. Your travel agent will forward deposits and other payments to us on your behalf, but your travel agent is not our agent for the purpose of receipt of monies. Receipt of deposits and subsequent payments by the travel agent does not constitute receipt of those monies by us and the travel agent has no authority expressed or implied to receive monies on our behalf. There is no liability on the part of Travelmarvel in respect to any monies paid to your travel agent unless and until Travelmarvel notifies you (by way of a booking confirmation advice or payment receipt advice) that monies have been received by Travelmarvel. Travelmarvel reserves the right to cancel any ticket or booking or refuse to carry any passenger where payment has not been received by Travelmarvel within the specified time.

7. Specific meal requests are requests only and cannot be guaranteed.

**COVID-19 REQUIREMENTS**

Before booking and before you travel, ensure that you check the latest Government travel requirements and Travelmarvel updates which include the on board protocols (which will be available on Travelmarvel's website at [www.travelmarvel.com.au/about-us/travel-updates](http://www.travelmarvel.com.au/about-us/travel-updates)) which will set out the obligations which apply to customers departing on tours. This may include obtaining proof of negative test results prior to embarkation, completion of health questionnaire, mask wearing, requirement to isolate if COVID-19 symptoms present during tour and removal of passengers from the tour if deemed necessary by medical staff. Compliance with the travel requirements and Travelmarvel updates is mandatory and anyone refusing to comply can be denied access to the tour or removed from the tour at Travelmarvel's absolute discretion.

Some of the regions or attractions visited while on tour may impose different regulations to that of the Government requirements, therefore proof of vaccination may be required to participate in some included or optional touring.

**MEDICAL ASSISTANCE**

Travelmarvel does not employ medical staff on our tours or ships. If you require medical attention, local medical services can be contacted immediately. You are responsible for all charges that result from a visiting a medical facility, or for a medical practitioner visiting you. Travelmarvel is not responsible for the type or quality of the medical services you may receive.

**LOCAL PURCHASES**

Travelmarvel is not responsible for any items you may purchase locally i.e.: jewellery/furniture etc. You acknowledge that you are solely responsible for any import duty or freight costs.

**PERSONAL BELONGINGS & LOST ITEMS**

For security reasons valuables should be kept to a minimum and packed in your hand luggage along with your medicines, camera, electrical or battery-operated appliances, as well as basic essentials such as a change of clothing and toiletries. It is your responsibility to look after your property at all times and you must ensure you are adequately covered by comprehensive travel insurance in the event of any loss.

**SMOKING**

Government regulations forbid smoking in tourist coaches however frequent stops are made for those wishing to smoke. Smoking is not permitted in hotel rooms or ship cabins. Requests for smoking/non-smoking rooms will be passed on to hotels but cannot be guaranteed.

**SERVICE ENQUIRIES**

If a problem occurs during your holiday you should, in your own interests, inform your tour director so that steps can be taken to resolve the matter. If you remain dissatisfied, any complaint must be made in writing to Travelmarvel within 30 days.

**LUGGAGE LIMITS**

Each passenger is entitled to take one piece of luggage that does not exceed 160 cm (63 inches), or weigh more than 20kg (44 pounds). Dimensions for checked baggage are calculated by adding together the width, height, and depth of the piece of baggage. An extra charge will be imposed to cover portage handling of any additional luggage. Your Tour/ Cruise Director will advise you of the exact additional charge.

**SPECIFIC CONDITIONS PERTAINING TO NEW ZEALAND HOLIDAY PACKAGES**

**PRICES – DEPOSITS – PAYMENTS**

A non-refundable security deposit of \$200 per person, per holiday package is required within seven days of booking confirmation.

Deposit requirements may vary when booking a special offer. Final payment of the balance of your holiday package price is due 100 days prior to departure unless stated in the terms of a special offer. Travelmarvel reserves the right to cancel any ticket or booking or to refuse to carry any passenger where payment has not been received within the specified time. All fares and charges are in AUD. Payment in full is required at time of booking for reservations made less than 100 days before departure from Australia. If Travelmarvel is unable to confirm your reservation, all monies will be refunded. Hotels may apply surcharges for late booking requests.

**TRAVELLING WITH MINORS**

Children under 15 when sharing accommodation with one adult receive 20% off the holiday price. Children under 12 years of age are not recommended to participate in a coach tour. Children under 18 years must be accompanied by an adult.

**INCLUDED IN HOLIDAY PACKAGE PRICE**

All coach and travel, accommodation, airport transfers on the first and last day, sightseeing, specified excursions, meals, tour, admissions and the services of a Tour Director (if minimum numbers are not met, the Tour Director's duties may be covered by a driver guide as stated in your itinerary).

**NOT INCLUDED IN HOLIDAY PACKAGE PRICE**

Airfares (unless stated), airport taxes, laundry, passport and visa fees, food not on the regular table d'hôte menu, drinks may or may not be included as indicated in your itinerary, excess baggage, fuel surcharges, optional excursions and gratuities not specified in your itinerary.

**PASSPORTS & VISAS**

Meeting necessary passport and visa requirements and cost is the sole responsibility of the passenger. APT is not responsible for delays or missed portions of cruise/tour relating to incorrect travel document

**CHOOSING YOUR HOLIDAY**

To maximise your enjoyment of your Travelmarvel holiday and to ensure that it lives up to your expectations, it is important that you choose the right holiday package for your requirements. Our brochures contain limited information, however, there is more information online at [www.travelmarvel.com.au](http://www.travelmarvel.com.au) and our qualified staff are available to discuss your options.

**HOTELS**

In more remote places, hotel standards may not be as high as in major centres. Travelmarvel endeavours to utilise the most suitable accommodation available in each destination to ensure that passengers enjoy high levels of cleanliness, comfort and service. The hotels listed in this brochure will be used on almost all holiday packages, however, if a change is necessary for any reason, Travelmarvel will endeavour to ensure that alternative accommodation is of an equivalent standard to those shown. Hotel rooms are generally not available for check-in before 3pm and require check-out by 10am. Where guaranteed use is required outside of these times you may be required to book and pay for additional nights.

**TWIN OR DOUBLE ROOMS**

Accommodation in all hotels, regardless of the rating, is in standard rooms (sometimes named superior/deluxe) based on twin or double unless otherwise stated.

**TRIPLE ROOMS**

Triple room prices are subject to availability and based on existing room size, hotel bedding (twin/double beds) and the third bed may be a rollaway.

**SOLO TRAVELLERS**

A limited number of single rooms may be available by request at the time of booking your holiday. Single rooms may smaller than standard twin or double rooms and often only have one single bed.

**PASSENGERS NEEDING SPECIAL ASSISTANCE**

Travelmarvel welcomes passengers with disabilities or special needs however, please note the following:

1. Any disability or medical condition requiring special attention must be reported to Travelmarvel at the time of booking including all important information relating to your health, mobility and fitness which may affect your partial or total participation in the tour. This information is also crucial to allow Travelmarvel to ensure the tour you have chosen is suitable and meets your needs. Any changes to health, mobility and fitness must also be reported to Travelmarvel as soon as possible and prior to departure. Where possible Travelmarvel will make reasonable adjustments to the tour to accommodate your special needs however, it cannot do so if the adjustment required would be unreasonable in all of the circumstances, including if such adjustments would affect your safety and/or the safety and/or enjoyment of other passengers.

2. If you require special assistance or care (such as pushing a wheelchair, assistance with dressing or assistance with walking), you must travel with a companion capable of providing the required assistance or care. Please be aware that Travelmarvel does not provide personal assistance. Travelmarvel is unable to assist any passenger with walking, dining, boarding or disembarking any transportation vehicles (including river ships and trains). To safely participate in embarkation and disembarkation you must be able to do so without the need for special assistance. You must also be able to do so without unreasonably impacting other passengers' safety and/or enjoyment.

3. While Travelmarvel will make reasonable efforts to accommodate the special needs of disabled passengers, it is not responsible for any denial of services by any third party entities it has travel arrangements with, such as carriers, hotels, trains, restaurants or other independent suppliers, or for any additional associated expenses charges by those parties.

4. Please note coaches, minibuses and 4WD vehicles are not equipped with wheelchair ramps. Wheelchairs and walkers cannot be carried on coaches, due to space limitations.

**HEALTH & FITNESS**

A Health, Fitness & Mobility Questionnaire will be provided and requested to be completed at the time of booking if you advise us of any health, fitness or mobility issues. A good level of fitness and health is required to participate on Travelmarvel's holiday packages. In some destinations there are extensive sightseeing excursions by foot which includes climbing of stairs. In some destinations there are extensive sightseeing excursions by foot and which includes climbing of stairs and walking over uneven surfaces and in some cases climbing over rocks and or walking through shallow streams and rivers. Mobility is needed boarding or alighting coaches, ships and trains. It is your responsibility to advise Travelmarvel of any pre-existing medical conditions that may affect the normal conduct of a holiday package and the enjoyment of other passengers. A Health, Fitness & Mobility Checklist will be requested at the time of booking and is also available on our website. Travelmarvel is not liable for any injury, illness, or loss of enjoyment, which could have been reasonably prevented had we been made aware of a pre-existing

condition and been provided an opportunity to review. We will not be responsible for any costs associated with cancellation penalties or the return of passengers from a tour, and a refund for lost touring cannot be claimed.

**ENHANCE YOUR JOURNEY – OPTIONAL EXCURSIONS**

These Select Experiences are an additional cost to the land tour price. Minimum and maximum group numbers apply for the tour to operate, and all tours are subject to availability and local conditions.

**IF YOU NEED TO CHANGE OR CANCEL YOUR HOLIDAY**

If you want to change any part of your holiday arrangements after the invoice has been issued, we will do our best to make the change, but it may not be possible. Any request for changes must be made in writing by the person who made the original booking, or his or her travel agent. If it is possible to make the change, it will be subject to an administration charge and payment of any further costs incurred as a result of the change.

**CANCELLATION POLICY**

The following Travelmarvel cancellation fees apply (in addition to charges of any independent suppliers e.g. airlines and hotels):

Days of Notice Prior to Departure:	Fee Per Person
100 days or more	Loss of deposit
99-61 days	50% of holiday package price
60 days or less	100% of holiday package price

All cancellations must be received in writing by Travelmarvel and are not effective until this notification has been received. If your holiday has commenced, 100% of the full holiday package price is charged. There is no refund for unused services or if portions of the holiday package are missed. Additional cancellation fees may also be charged in respect of accommodation reserved outside the holiday package dates. These cancellation fees are in addition to any fees that may be levied by Travelmarvel and your travel agent (if any). You acknowledge that the amounts estimated under the Cancellation Policy are reasonable and represent a genuine pre-estimate of Travelmarvel's loss and are otherwise reasonably necessary to protect the legitimate interests of Travelmarvel. If you request changes after Travelmarvel has issued your documents, Travelmarvel may charge you an administration and processing fee of \$70 per person in addition to any applicable cancellation fees.

**CANCELLATION OF TICKETED AIRFARES**

A Travelmarvel cancellation fee of \$50 per person applies for ticketed airfares, in addition to any airline cancellation fees that are applicable.

**CHANGES TO TICKETED AIRFARES**

If you wish to amend the date or touring on your ticketed air booking, a Travelmarvel amendment fee of \$30 per person for the first change and \$85 per person for any subsequent changes will be charged in addition to airline change fees and additional taxes that are applicable. If, for any reason, a name change to a ticketed airfare is required, a \$125 per person name change fee will apply for every change in addition to any applicable airline fees.

**IF WE NEED TO CHANGE OR CANCEL YOUR HOLIDAY**

Travelmarvel endeavours to provide you with all the services confirmed to you at the time of your booking. However, we plan arrangements a long time in advance of your departure date using independent suppliers such as airline, hotels, etc., over whom we have no direct control. On occasions changes do have to be made, and Travelmarvel reserves the right to cancel or amend holiday packages/excursions accordingly. Group tours require a minimum number of bookings in order for the tour to be financially viable and to have a pleasant group atmosphere. In the event that adequate numbers cannot be achieved, it may be necessary to cancel a scheduled departure and offer the nearest possible alternative date (or a full refund of monies paid for arrangements made by Travelmarvel).

**ON HOLIDAY**

**NOISE AND VIBRATION**

Travelmarvel takes reasonable steps to minimise noise and vibrations on its coaches. You acknowledge and accept that some noise and vibration may be experienced on vessels and coaches, which Travelmarvel is not liable to you for any such noise and vibration.

**SEAT ALLOCATION ON COACH TOURS**

To ensure all passengers enjoy forward and window seats, we have incorporated a daily seat rotation system, which is not negotiable for any reason.

**CHANGES DUE TO WEATHER**

Due to the nature of the terrain and remote areas, weather fluctuations can adversely affect road conditions, which may necessitate alterations to itinerary with little or no notice. Content and inclusions are subject to seasonal variances.

**MAPS WITHIN THIS PUBLICATION**

Note that maps may not be to scale.

**IMAGES WITHIN THIS PUBLICATION**

Some images in this publication are copyright of, and have been reproduced with the permission of: TransAlpine Train; Coastal Pacific Train; Heartland Hotel Fox Glacier; Peppers Bluewater Resort, Lake Tekapo; Copthorne Hotel & Apartments; Queenstown Lakeview; Sudima Hotel; Agrodome Sheep Show; Te Puia, Rotorua; Shotover Jet, Ngai Tahu Tourism; Million Dollar Cruise.

Publication No. TM-1727AU. Prices and itineraries valid from 1 September 2023 until 9 June 2024. Tours outside these dates follow different itineraries and pricing may vary, enquire for details. Publication is valid from 21 October 2022 and supersedes all previous publications.





# TRAVELMARVEL

Travel More

## Premium Cruising & Touring



## RESERVATIONS & ENQUIRIES

**Free Call:** 1300 300 036  
**Online:** [travelmarvel.com.au](http://travelmarvel.com.au)  
**Email:** [info@travelmarvel.com.au](mailto:info@travelmarvel.com.au)

**Group Reservations**  
1800 655 440

**Worldwide Offices**  
Melbourne                      Europe  
New Zealand                  United Kingdom  
North America

HEAD OFFICE Australian Pacific Touring Pty Ltd (ABN 44 004 684 619).  
ATAS accreditation #A10825) Level 4, 1230 Nepean Highway, Cheltenham, VIC 3192  
VALIDITY – Printed in Australia. Publication No. TM-1727AU. Effective from  
21 October 2022, publication supersedes all previous publications.

## YOUR LOCAL TRAVEL AGENT

Find us on:



PART OF THE  
APT TRAVEL GROUP